



## Acusticell Combi

### Applications

#### Industry

Hoods for engines, compressors, hydraulic machines.

#### Transport and contracting

Engine room insulation for Boats, Motorcars, buses, trucks, contractor's machinery, forest machinery.

#### Health care and large-scale kitchens

Dishwashers.

#### Buildings

Insulation of engine rooms.

### Method of use

The pieces are cut or punched out to the desired shape and permanently glued on to the inner surface of the engine hood/wall. When applying, the surface must be free from oil, dirt, and dust. Mechanical mounting recommended.

### Product characteristics

Acusticell Combi is a product for combined sound insulation and sound absorption.

It has a barrier mat on a soft foam distance and a sound foamed polyurethane covered with an elastic film if urethane. It is preferable used for insulation of boat and vehicle engine rooms

### Advantages

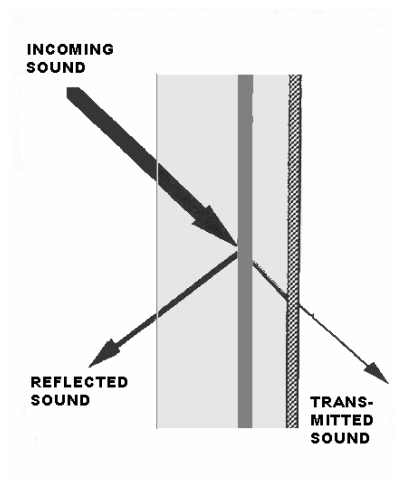
- ❑ Extra ordinary sound insulation and absorption
- ❑ Aesthetically attractive surface
- ❑ Resistant to mechanical wear
- ❑ Film is resistant to petrol and most chemicals
- ❑ Repels liquids and moisture
- ❑ Easy to wash
- ❑ Difficult to ignite

## To insulate Noise

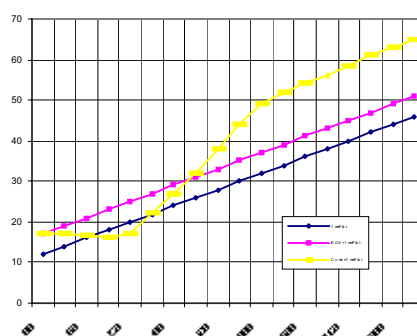
When the sound wave hits the wall one part of the sound energy is reflected and one part is transmitted further through the wall. A heavier wall reflects more sound energy than a lighter.

The best way of increasing the transmission loss is to apply a barrier mat at a soft foam distance to the wall. The transmission loss significantly increases, i.e. more sound energy are reflected and does not transmit through the wall.

It is important not only to reflect the sound energy but also to absorb the reflected energy. When using "Combi", the sound reflected is taken care of by the 20 mm foam absorber.

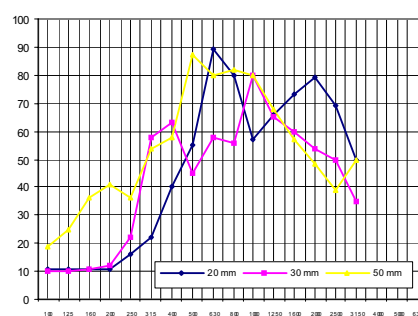


### Transmission Loss, $D_{TL}$ (dB)



Frequency, Hz, Third Octave Bands

### Absorption Coefficient, % (ISO 10534)



Frequency, Hz, Third Octave Bands

## Technical data

Total thickness	33 mm
Thickness absorber	20 mm
Thickness Barrier mat	3 mm
Thickness Distance foam	10 mm
Weight Barrier	5,5 kg/m <sup>2</sup>
Fire class	ISO 3795, FMVSS 302
Colour surface	Black polyurethane
Delivery format	1200x1500 mm

## Experiences

The shaping and positioning of the material is of major importance to achieve an optimal sound-dampening effect.

SONTECH has long experience of practical noise control projects in a wide range of industrial fields. These experiences can be a valuable addition to the laboratory data given in the datasheet.

SONTECH can also assist with advice and sound measurements for noise control and in the manufacture of customised material sets.

## Designation system

Order code                      Combi



Sontech NoiceControl- Odecon Sweden AB  
SE 196 37 Kungsängen Energivägen 6  
Tel +46 8-445 50 60  
Fax +46 8-38 47 99  
mail@sontech.se  
www.sontech.se